

Wilcox Distribution, LLC is pleased to offer this user's manual for IVP'S BIODEFENSE INDOOR AIR PROTECTION R1 SYSTEM



GYMS



DANCE STUDIOS



CLASSROOMS



CRUISE SHIP AND HOTEL ROOMS



HOMES



CHURCHES AND WORSHIP CENTERS



**STAY SAFE, INFORMED,
SANITIZED, AND SECURE.**

+1-888-370-1999 | info@wilcoxops.com



How to use the World's Only Biodefense
Indoor Air Protection System™

User Manual

r1 room



Thank you for choosing the World's Only Biodefense Indoor Air Protection System™

Your safety is very important to us.

**All precautions should be followed to reduce
the risk of fire, electric shock, or injury.**

- Use the unit only for its intended use.
- To protect against a risk of electric shock, do not immerse any part of the system in water or in any other liquids.
- This appliance is NOT a toy.
- This appliance is NOT to be used by children or persons with reduced physical, sensory or mental capabilities.
- Children should be supervised at all times.
- To reduce the risk of an electric shock or damage to the unit, switch the off and unplug before cleaning or performing any maintenance to the unit.
- Heed all warnings

Contents

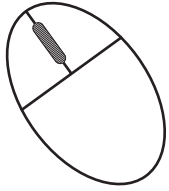
Getting Started

- 6 Important Safety Instructions
- 7 Key Components
- 8 Operating States
- 10 Transport and Positioning

Maintenance

- 11 Cleaning
- 11 Service and Support
- 12 Operation and Transportation Environment

We are here to help:



Online
ivpair.com



Support Center

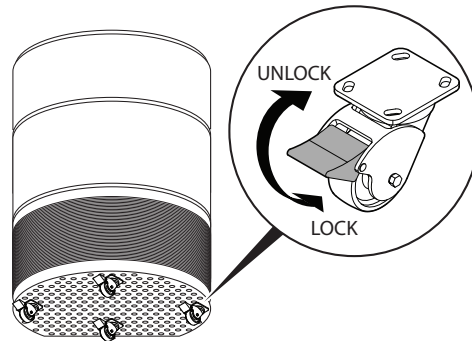
Call: 1-713-953-8480 or
1-800-713-4872

between Mon-Fri 8am to 8pm CST;
Sat 9am to 6pm CST

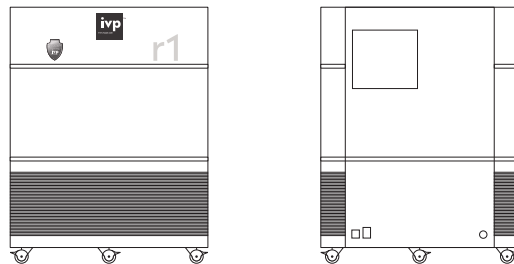
Email: info@ivpair.com

What's in the box

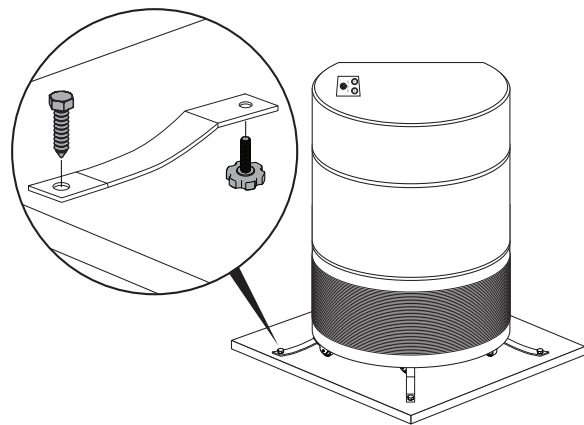
Lockable Caster Wheels



IVP Air Disinfection System Unit



Bottom stabilizers for shipping



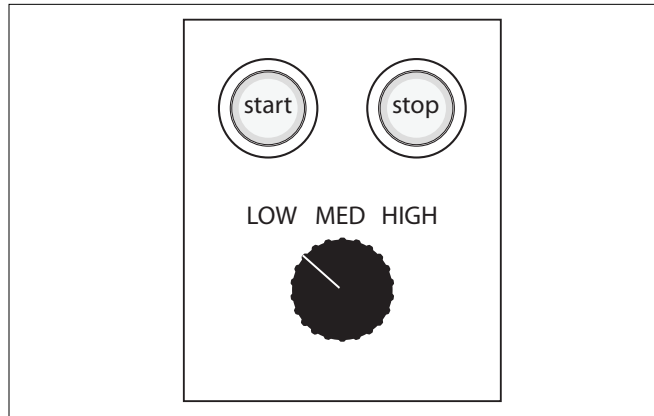
Getting Started

Important Safety Instructions

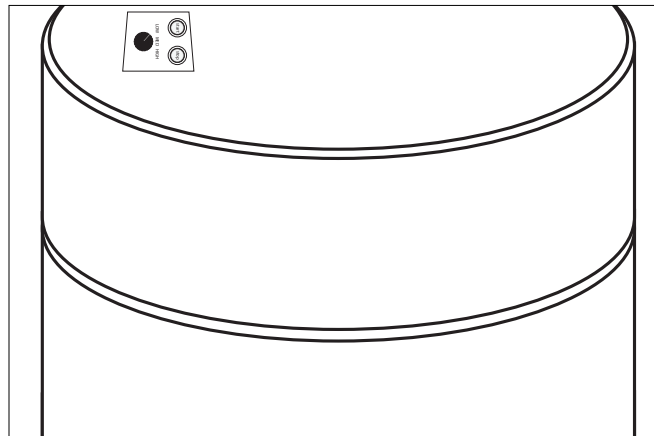
- Use the unit **ONLY** for its intended use.
- To protect against a risk of electric shock, do not immerse any part of the system in water or in any other liquids.
- To reduce the risk of an electric shock or damage to the device, switch it off and unplug the device before cleaning or performing **ANY** maintenance to the device.
- To reduce the risk of burns from hot surfaces, switch the device off and allow it to cool before performing any maintenance to the device.
- This device is **NOT** a toy, and children should always be supervised if near the device.
- This device is **NOT** to be used by children or persons with reduced physical, sensory, or mental capabilities.
- Effectiveness of this device may degrade if filters are not cleaned or replaced as specified.
- When moving the device, care must be taken to ensure it does not tip over or roll out of control.
- The device may lose effective function if used outside of the operating conditions specified.
- To avoid damage to the device, **ONLY** use cleaning chemicals and procedures as specified.
- Do not attempt to repair or replace any part of this device unless it is specifically recommended in this manual. All other services should be referred to a qualified technician.
- No form of water or liquid should enter the device. Should this occur, **IMMEDIATELY** switch off the device and unplug it. Contact your distributor.
- To protect against a risk of electric shock, do not immerse **ANY** part of the system in water or in any other liquids.
- Do not place any heavy objects on the power cord as this may cause a fire and/or an electric shock.
- Make sure the power cord is plugged firmly into the outlet. If the power is not plugged in correctly, this may cause a fire or an electric shock.
- Plug the device into a dedicated 110V AC power outlet only. Do not overload the power outlets with several cords simultaneously. Do not power the unit through power bars or extension cords.
- Do not touch the plug with wet hands, as this may cause serious injuries.
- Do not alter or modify the plug or cord of this device, as it could cause a fire or an electric shock.
- Use the proper power cable and outlet.
- Lightning or static electricity could affect the circuit and may cause a fire or damage the unit. To avoid this, plug the device into a dedicated, grounded outlet.
- Do not block the air inlet of the device, as this will reduce the airflow, resulting in poor performance and may cause damage to the device.
- Do not sit, stand, or place heavy objects on the device, as this may result in injury and/or damage to the device.

Getting Started

Key Components—Controls



Located on top of the unit the mode buttons, with button LED lights. Low, Medium and High fan settings allow users to adjust the level of air circulation



LED strips (top rim and shoe lighting)

Getting Started

Operating States

The device operates in one of five operating states. The user may set the operating state of the device and select the fan mode by pressing one of the mode buttons.

System States:

Start, Sleep, Circulating, Heating, and Service State

Fan Modes: Low, Medium, and High

1. Start State:

When power to the device is switched on, the system starts and goes in SLEEP State.

2. Sleep State:

In this state, heaters are switched off, fans are powered, but the speed is set to zero therefore, there is no apparent activity. The LED strips and the button LEDs are off.

Pushing the start will bring the system to CIRCULATING state.

3. Heating State:

In this state the fan's speed is zero, LED strips are on, and the system performs internal Filter Heating.

Entering and exiting this state is automatic. The interval time when HEATING state is triggered is nominal 20 minutes, adjustable by service.

4. Circulating State:

In this state, the fans are active. The heaters are off, and the LED strips are on. Only the start button LED is on, indicating the active fan operating mode. The fans can be operated in the following modes:

Fan Speed

The user may select the fan operating mode by turning the knob to the desired speed—Low, Medium, or High.

Fans run indefinitely at low speed or medium speed.

Operating States Continued

After finishing the heating process, the system goes back to CIRCULATING state, and resumes operating with the fan mode already established. The user can not interrupt the HEATING process.

5. Service State: The system automatically goes into this state if an anomaly that requires service intervention is detected.

In this state, heaters are switched off, fans are powered, but the speed is set to zero therefore, there is no apparent activity.

The operating states for the device are shown in the following table:

State	Activity	Fan	Heater	Button LEDs	LED Strips
START	System Power-on	Off	Off	Off	Off
Sleep	System idling	Off	Off	Off—TBC	Off
Circulating	Air moving	Selected Mode (Quiet/Normal/Boost)	Off	Mode LED On (Quiet/Normal/Boost)	On
Heating	Heating	Off	Off		On
Service	Waiting for help	Off	Off		Off

Getting Started

Transport and Positioning

Setting Up

The device may be moved by pushing it with the handles on the sides.

Before moving the device, ensure that the wheels are unlocked.

Setting Up

After positioning the device for operation, lock the wheels to ensure it does not roll or move unintentionally.

Preparing the space

The device may be positioned against a wall.

Warning: Ensure that the air inlet of the device is not blocked, as this will reduce the airflow and result in poor performance and may cause damage to the device.

Maintenance

Cleaning

Materials to be used:

- Microfiber cloth
- Cleaning solution (10% bleach with clean water)

Cleaning process:

1. Turn unit off
2. Unplug unit from electrical source
3. Using a damp microfiber cloth and carefully wipe the exterior of the unit making sure no water enters the unit

NOTE: ONLY CLEAN OUTSIDE OF UNIT

4. Allow unit to fully dry before plugging in and restarting the unit

Warning: Failure to follow the steps listed can result in permanent damage to the unit and can potentially be harmful to the operator.

Warning: The device should **ONLY** be cleaned when it is switched off and disconnected from the power grid.

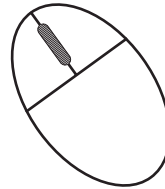
Warning: Ensure that no form of water or liquid enters the device. Should this occur, **IMMEDIATELY** switch off the device and unplug it. Contact your distributor.

Maintenance

Service

All service should only be performed by an authorized IVP service team member.

Support



Online

ivpair.com



Support Center

Call: 1-713-953-8480 or

1-800-713-4872

between Mon-Fri 8am to 8pm CST;

Sat 9am to 6pm CST

Email: info@ivpair.com

Maintenance

Operating and Transport Environment

- Operating temperature: +5°C to +40°C, 15% to 90% RH at atmospheric pressure 700 hPa to 1060 hPa
- Storage / Transport Temperature: -40°C ± 2°C, Ambient RH / +60°C ± 2°C, 5% R